



INTERPOL

Illicit Markets Sub-Directorate
Environmental Security Programme

12 June 2024

INTERPOL Areas of Intervention



The Illicit Markets Sub-Directorate



**ILLICIT GOODS
AND GLOBAL
HEALTH
PROGRAMME
(IGGH)**

**ENVIRONMENTAL
SECURITY
PROGRAMME
(ENS)**



ENS Crime Areas



Fisheries Crime

crimes in the entire fisheries sector, from harvest to processing, including food fraud at customer levels



Forestry Crime

criminal activity in the forestry sector covering the entire supply chain, from harvest and transportation to processing and selling.



Illegal Mining

both illegal extraction and trade of minerals, including the illegal use of toxic chemicals (such as cyanide and mercury) in mining activities



Pollution Crime

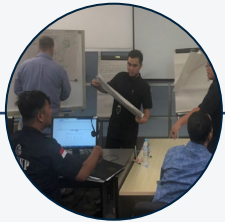
range of criminal activities involving the trafficking and/or the illegal management of potential contaminants



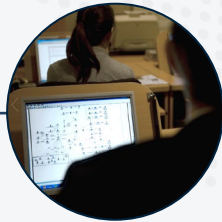
Wildlife Crime

criminal activities involved in exploiting wildlife across the globe, threatening protected wildlife species, affecting vulnerable communities, national economies, and human health

Policing Capabilities



**CAPACITY
BUILDING**
(Training and
mentoring)



**CRIMINAL
INTELLIGENCE
ANALYSIS**



**OPERATIONAL
SUPPORT
TEAMS**



**REGIONAL
INVESTIGATIVE
CASE
MEETINGS**



OPERATIONS

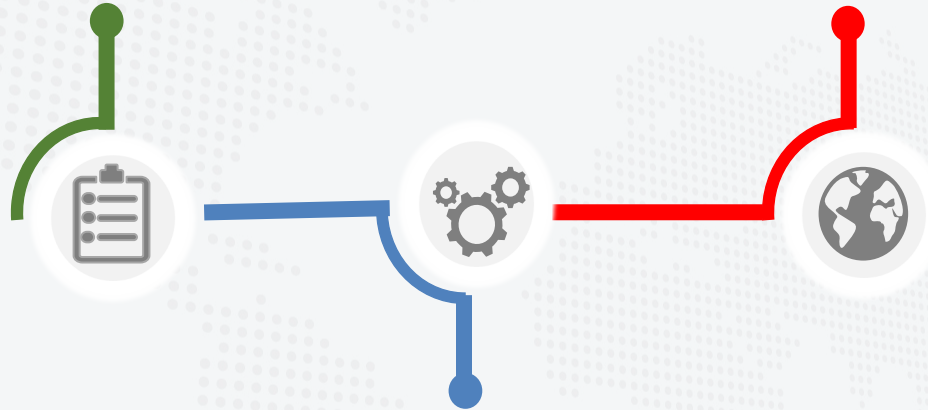


**MULTI-AGENCY
COLLABORATION**

INTERPOL's Approach to Enhance International Cooperation

ASSESSMENT AND OUTREACH

INTERPOL Environmental Security Programme receives information via the **National Central Bureaus and partner organizations**



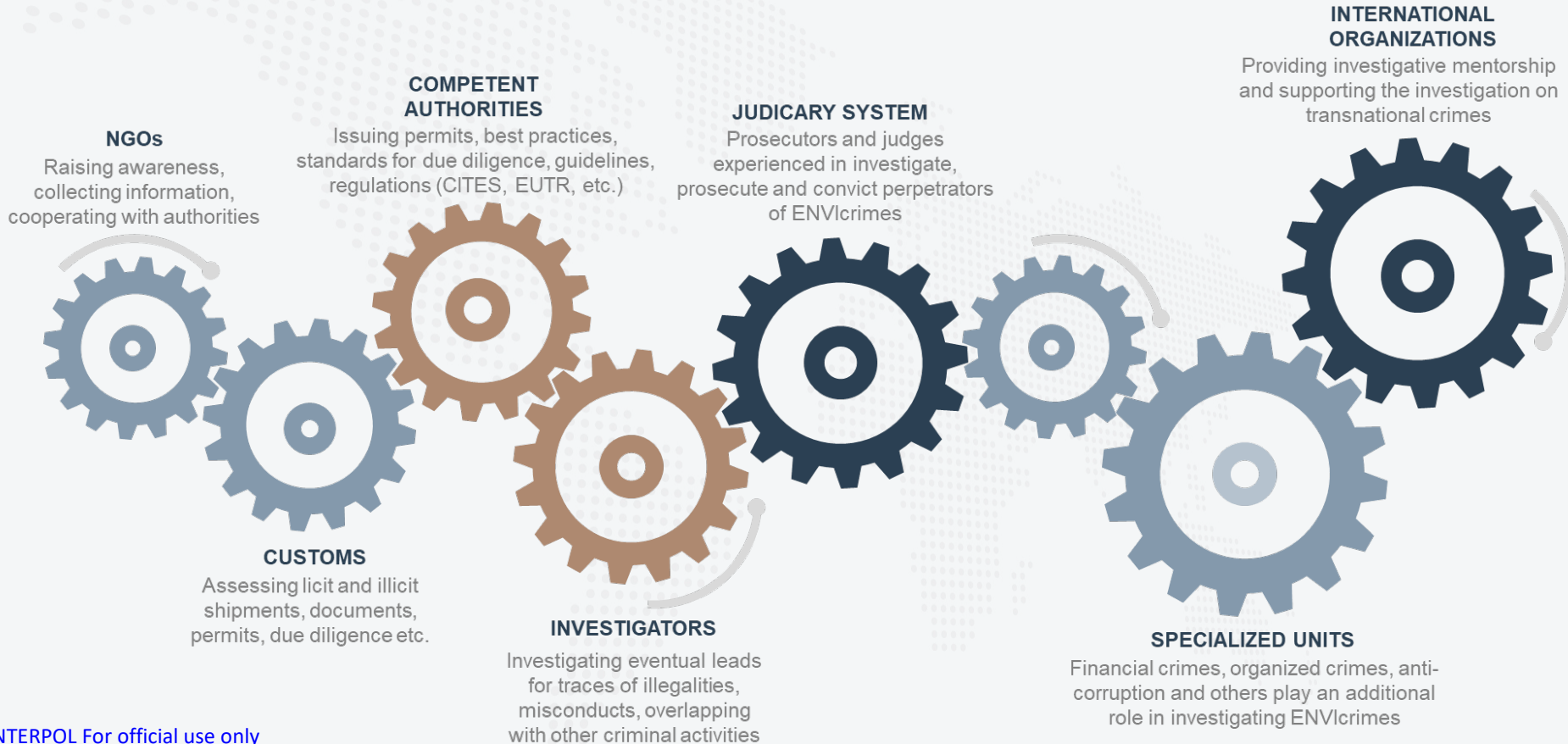
INVESTIGATIVE AND OPERATIONAL SUPPORT

Following the preliminary positive outcomes from the discussions, INTERPOL Environmental Security Programme supports its Member Countries using its **unique capabilities**

INFORMATION EXCHANGE AND ASSESSMENT

INTERPOL Environmental Security Programme sends **Requests for Information**, assesses the information collected against its **Databases** and facilitates **bilateral meetings** between member countries to exchange information and plan a coordinated response to the problem

INTERPOL's Approach to Enhance International Cooperation



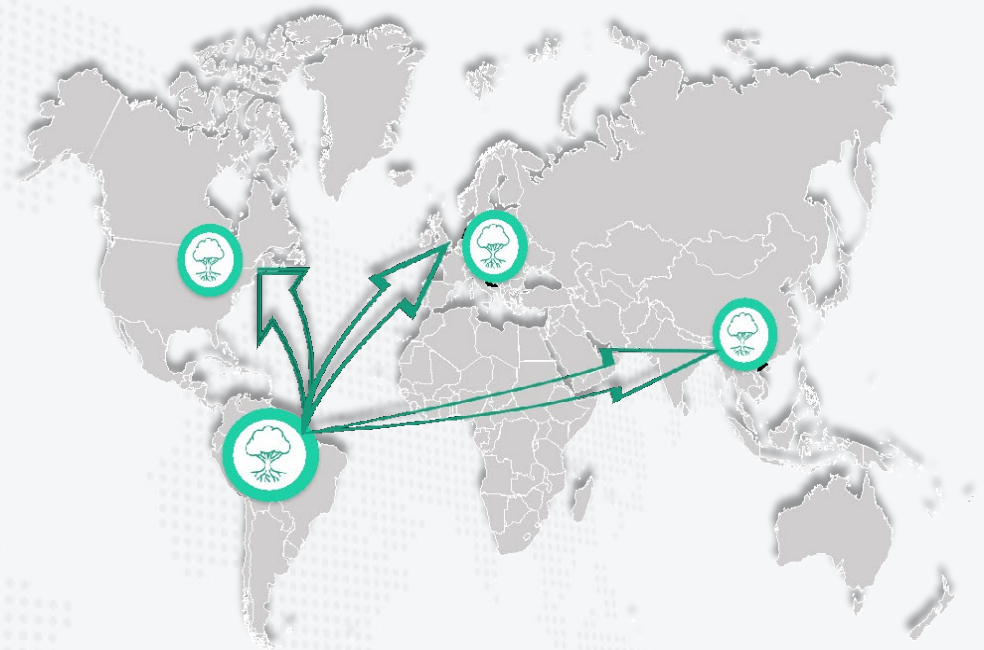
CASE STUDY

Illegal logging and illicit timber trafficking



Background

- An INTERPOL member country in South America opened an investigation on a large criminal network in 2019
- Suspected to be involved in illegal logging and illicit timber trafficking, and:
 - Corruption
 - False declaration
 - Forged documentation
- 760,000 hectares of forest impacted.
- Estimated value: USD 22 Million per year



- Links between the companies – not visible at national level
- Arrests and seizures of electronic devices
- 1 Red INTERPOL notice; 12 BLUE INTERPOL notices
- Request for support from national authorities to INTERPOL early 2023

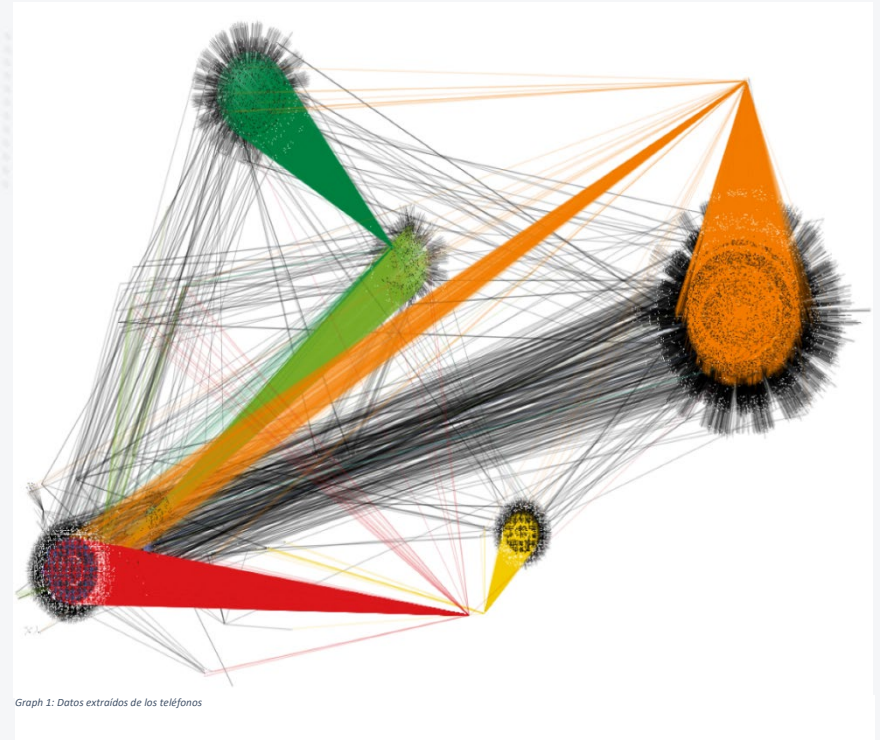
Investigative and analytical support

Cross-checks and analysis

- 39 000 Entities
- 12 839 individuals
- 11 918 Phone numbers
- 11 382 social media accounts
- 2 241 email address

Findings

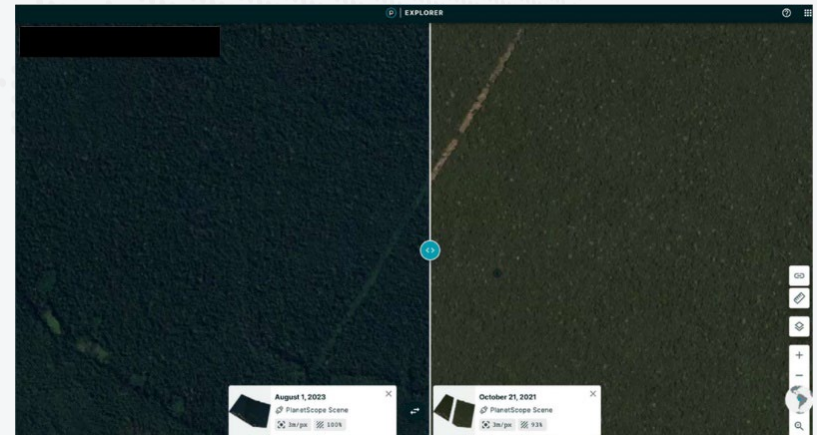
- 76 Companies
- 86 individuals directly associated
- 2 main crime groups detected
- Links with the Americas, Asia and Europe
- Serious Crime convergence



More than 20 Suspects From National Authorities

Satellite Imagery Analysis

- To confirm if deforestation had taken place in specific areas over determined periods of time; how much was extracted; what species and the value.
- Identification of possible cross-over crimes by the same criminal network.



Possible areas for collaboration

- Accounts with access to satellite imagery
- Training to work with the platform
- Receiving reports for areas of interest
- The possibility of obtaining a high-resolution image of an area of interest.
- The possibility of generating a wind rose on the overlay options when a screenshot is needed.
- Automatic measurement and monitoring of changes in areas of interest and of alerts.
- The possibility of receiving a notification as soon as an area of interest changes or of alert changes.
- The possibility of creating a table including the following parameters: area, date, and geolocation (latitude and longitude).



INTERPOL





INTERPOL

Thank you!

INTERPOL Environmental Security Programme

environmentalcrime@interpol.int