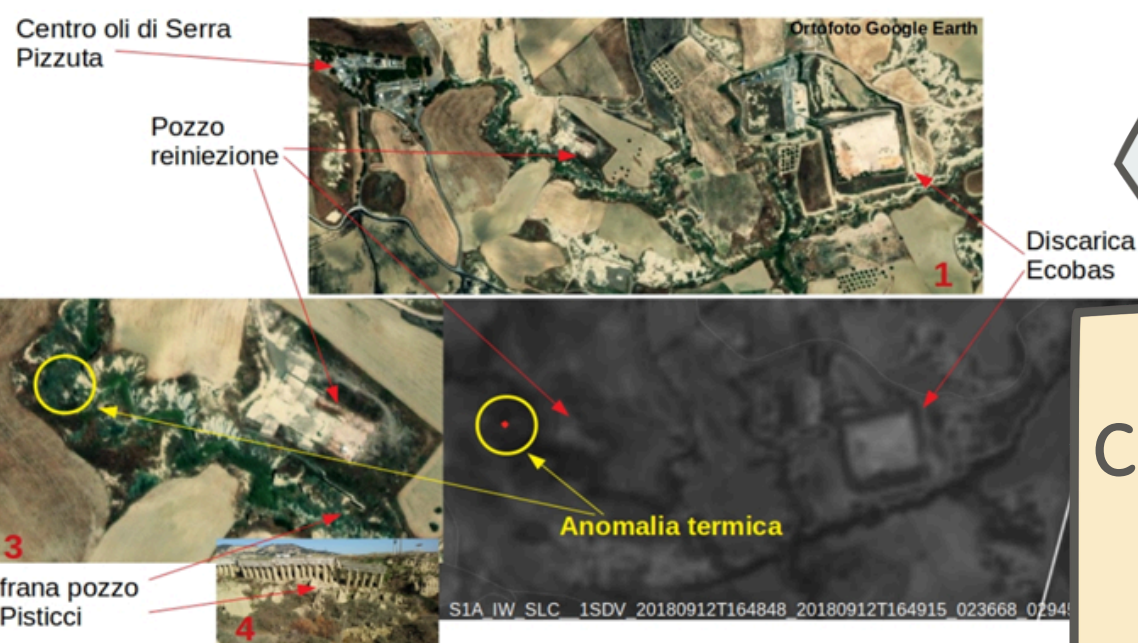


SENSING FOR JUSTICE

CIVIL SOCIETY MOBILISING GEOSPATIAL DATA TO DEMONSTRATE ENVIRONMENTAL INCOMPLIANCE

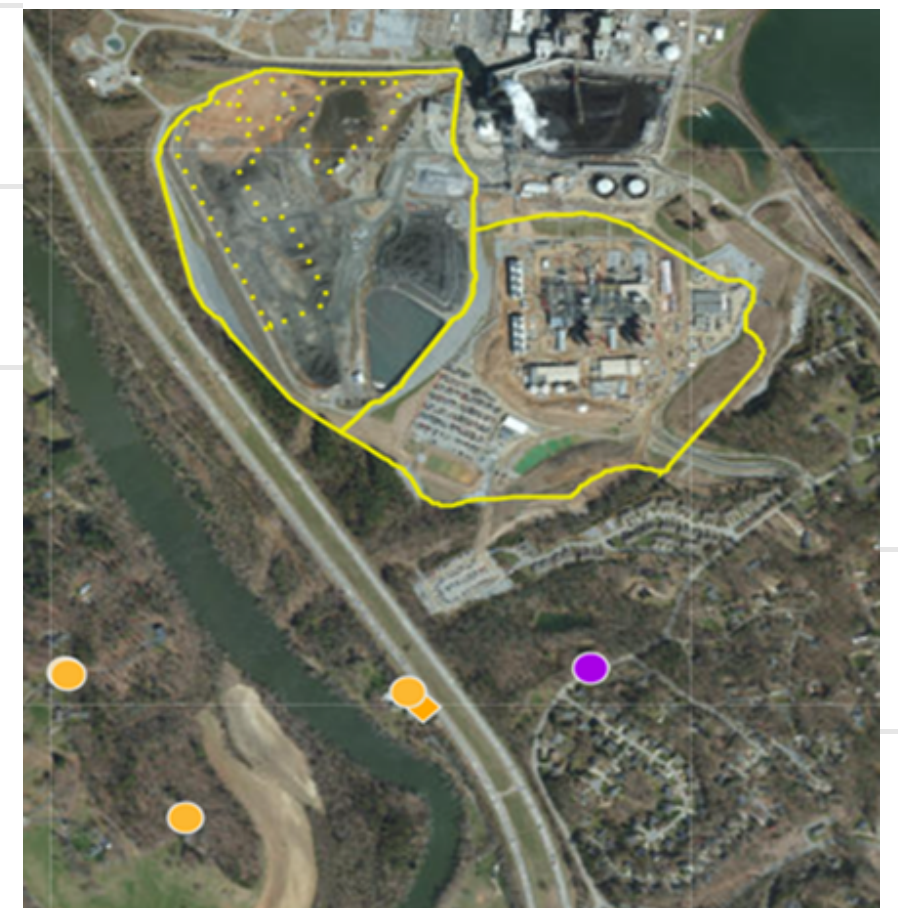


THE SENSING FOR JUSTICE PROJECT
CIVIC MONITORING AS A SOURCE OF EVIDENCE FOR ENVIRONMENTAL LAW ENFORCEMENT AND EARLY WARNING



GAS FLARING IN BASILICATA

CIVIC MONITORING IS INCREASINGLY RELYING ON GEOSPATIAL DATA



COAL ASH IN NORTH CAROLINA

WASTE MANAGEMENT VALLE GALERIA, LAZIO

EVIDENCE FOR #INVESTIGATIONS #COURT CASES #MEDIATION

- FILLING OFFICIAL REPORTING GAPS
- EARLY WARNING FOR PROSECUTORS
- COMPLEMENTING & ENHANCING PUBLIC MONITORING

OPEN QUESTIONS:

- SYSTEMATIC UPTAKE?
- RESOURCES NEEDED?
- LEGAL RISKS FOR CITIZENS?



ANNA BERTI SUMAN
ANNA IS A RESEARCHER, LAWYER AND ACTIVIST ON CIVIC ENVIRONMENTAL MONITORING. SHE IS RESEARCH FELLOW IN SUSTAINABLE INNOVATION LAW AT LUISS, ROME, SHE FOUNDED THE 'SENSING FOR JUSTICE' PROJECT.
ABERTISUMAN@LUISS.IT